

Time duration for the exam is 2 hours including the reading time.

**Question 1**

**Choose the correct answer:**

**[4]**

- (i) The standard unit of length is \_\_\_\_.  
(a) metre (b) kilometre (c) millimetre (d) centimetre
- (ii) Which is a non luminous object?  
(a) sun (b) moon (c) star (d) bulb
- (iii) What is the process by which liquid changes to solid called?  
(a) evaporation (b) melting (c) condensation (d) freezing
- (iv) Salt is separated from sea water by \_\_\_\_\_.  
(a) distillation (b) evaporation (c) sedimentation (d) decantation
- (v) Friction between the surface of moving machines can be reduced:  
(a) fevicol (b) paint (c) oil (d) water
- (vi) \_\_\_\_\_ trees usually grow in plains.  
(a) deciduous (b) coniferous (c) mangrove (d) evergreen
- (vii) \_\_\_\_\_ can live on both land and water.  
(a) fish (b) snail (c) newt (d) hyena
- (viii) Nearly three fourth of the air is \_\_\_\_\_.  
(a) helium (b) oxygen (c) carbondioxide (d) nitrogen

**Question 2**

**(i) Name the following:**

**[4]**

- (a) The material that allow only some of the light to pass through.
- (b) The measure of hotness or coldness of an object.
- (c) The invisible energy makes us to see the world around us.
- (d) The method of separating soluble solid from its solution.
- (e) Force that opposes the movement of an object.
- (f) It prevents the harmful rays of the sun from reaching us.
- (g) The amount of water vapour present in the air.
- (h) The scientist who discovered gravity.

**(ii) Write whether the following sentences are TRUE or FALSE:**

**[3]**

- (a) There are intermolecular spaces between molecules of liquid.
- (b) Friction is less on rough surface.
- (c) Carbondioxide is needed to burn things.
- (d) Polar bear is adapted to live on trees.

- (e) We should use beautiful things made up of animal skin, tusks and horns.
- (f) Unlike poles repel each other.

### Question 3

**Complete the passage by fill in the blanks:**

[3]

One sunny morning, Sam and Lily were playing outside when they noticed their dark shape on the ground. Sam asked, "Why does this dark area change size throughout the day?" Lily thought for a moment and said, "I remember that light travels in a (i)\_\_\_\_\_ line and is made up of (ii)\_\_\_\_\_ colours. These colours are called (iii)\_\_\_\_\_." Sam picked up a small ball and held it in the sunlight. "Look! When I place an (iv)\_\_\_\_\_ object in the path of light, it bounces back. The dark area formed behind it is called a (v)\_\_\_\_\_." Lily nodded and said, "This dark area is shorter during (vi)\_\_\_\_\_ time of the day!"

### Question 4

**(i) Give reason for each of the following:**

[3]

- (a) Moon gives us light at night but it is a non luminous object.
- (b) Talcum powder is spread on carrom board.
- (c) Balloon burst when we keep on filling air in it.

**(ii) Define the following:**

[4]

- (a) Arboreal
- (b) Mass
- (c) Sedimentation
- (d) Luminous Objects

### Question 5

**Give two examples for each of the following:**

[5]

- (i) Solids which can be melted \_\_\_\_\_, \_\_\_\_\_
- (ii) Underwater plants \_\_\_\_\_, \_\_\_\_\_
- (iii) Decomposers \_\_\_\_\_, \_\_\_\_\_
- (iv) Natural Sources of light \_\_\_\_\_, \_\_\_\_\_
- (v) Devices for measuring mass \_\_\_\_\_, \_\_\_\_\_

### Question 6

**Study the given picture and answer the questions that follow:**

(i)

[2]



- (a) Identify the type of force.
- (b) Write the Latin word meaning of the force shown.

(c) Explain the force shown in the picture.

(ii)



(1)



(2)

[2]

(a) Write the difference between the picture (1) and (2)

(b) Which one is safe on road? Why?

(c) The brakes of the vehicle cannot work without \_\_\_\_\_.

(iii)



[2]

(a) Name the process shown in the above picture.

(b) \_\_\_\_\_ is called universal solvent.

(c) This method is used to separate \_\_\_\_\_ from liquids.

(d) Where do we use this method in our daily life?

(iv)



[2]

(a) Name the type of adaptation seen in the above picture.

(b) They have \_\_\_\_ instead of flowers.

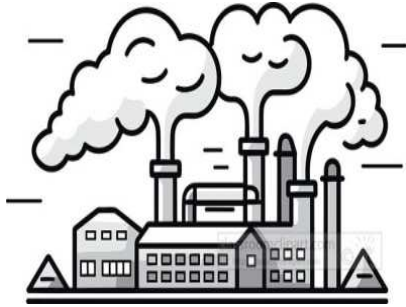
(c) Where do we usually find them? Give examples.

(d) Why are they mostly evergreen?

### Question 7

Answer the following:

- (i) The diagram given below is a type of pollution that affects the life on earth in numerous ways. Study the same and answer the questions that follow: [2]



- (a) Identify the type of pollution shown above.  
(b) Define (a).  
(c) Mention any two ways to avoid that pollution.
- (ii) Cycling is a good exercise. [2]  
(a) What type of force is needed for pedaling the cycle?  
(b) What is force?  
(c) Write two effects of force.
- (iii) Elephants sometimes trespass into human settlements in search of food and water because their habitat is disturbed. [2]  
(a) What is habitat?  
(b) Write any two adaptations seen in animals that live in hot deserts.

\*\*\*\*\*