

Name:.....		Class & Div		Roll No.....	
Marks Scored	<div></div>	Signature of the Invigilator	<div></div>		
Max. Marks	<div></div>	Signature of the Parent	<div></div>		

Question 1

Choose the correct answer: [3]

- (i) ----- is a house made of cloth.
(a) Tent (b) Boat house (c) Log house (d) Caravan
- (ii) We go to ----- to play and relax.
(a) market (b) park (c) school (d) bank
- (iii) A ----- mends our shoes.
(a) tailor (b) sweeper (c) cobbler (d) teacher
- (iv) A ----- cleans the rooms in a school.
(a) peon (b) gardener (c) guard (d) sweeper
- (v) Republic Day is celebrated on ----- .
(a) 2nd October (b) 26th January (c) 5th September (d) 15th August
- (vi) We receive guests in the -----.
(a) kitchen (b) drawing room (c) bedroom (d) dining room

Question 2

Fill in the blanks: [3]

Sam lives in a city. He always goes to his office in his -----
(bullock cart/car).

During the summer vacation, he went with his family to London in -----
(aeroplane/boat).

During this trip, they went across the river Thames in a -----
(bus/boat).

They visited many places in London in a ----- (truck / bus).

When they reached back home, he went to visit his mother who lived in the
nearby village in the ----- (train / cycle rickshaw).

There were no roads, so he travelled in a -----
(cycle rickshaw / truck) to buy the vegetables.

Question 3

Study the pictures given below and answer the questions that follow:

- (i) [4]



- (i) Name the landform shown above. -----

- (ii) Write the name used to call the area between them. -----
- (iii) Name the mini model of our Earth. -----
- (iv) What do you know about the desert? (Answer in one sentence.)

(ii)

[4]

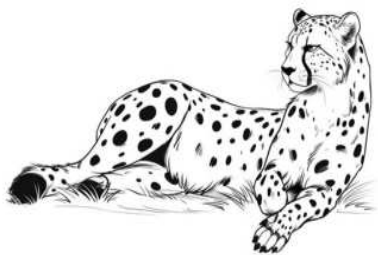


- (i) Name the group of plants to which the given picture belongs. -----
- (ii) Write one sentence about this group of plants.

- (iii) Write any one use of a plant.

(iii)

[4]



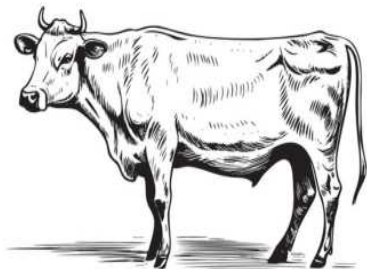
- (i) Name the group of animals to which the given one belongs. -----
- (ii) What do you know about them? (Answer in one sentence.)

- (iii) Write two examples for animals that belong to this group.

(iv)

Write **P** for pet animals, **F** for farm animals and **W** for wild animals.

[3]



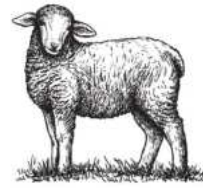
- (a) -----
- (b) -----
- (c) -----



(d) -----



(e) -----



(f) -----

Question 4

Circle the odd one:

[2]

- (i) cobbler, mechanic, computer room, mason
- (ii) park, school, teacher, hospital
- (iii) bus, tram, truck, car
- (iv) laptop, herb, mobile, letter

Question 5

(i) **Match the following:**

[3]

- | | | |
|---------------|---|--------------|
| (a) Tree | - | Perfume |
| (b) Herb | - | Medicine |
| (c) Climber | - | Sugar |
| (d) Tulsi | - | Mint |
| (e) Sugarcane | - | Cotton plant |
| (f) Jasmine | - | Coconut |
| | - | Pea |

(ii) **Name two each:**

[6]

- (a) Parts of a plant- ----- , -----
- (b) Vehicles travel on rails- ----- , -----
- (c) Religious festivals of India- ----- , -----
- (d) People in our neighbourhood- ----- , -----
- (e) Insects- ----- , -----
- (f) Different kinds of houses- ----- , -----

Question 6

Write whether the following sentences are TRUE or FALSE:

[2]

- (i) We send e-mails from computers. -----
- (ii) Bus is a means of communication.-----
- (iii) Sign language is used by and with deaf people. -----
- (iv) Letters are the quickest means of communication. -----

Question 7

Answer the following:

[6]

- (i) What is 'Communication?'

- (ii) What do we get from the following?

(a) Hen- -----

(b) Sheep- -----

(c) Cotton plant- -----

(d) Cow- -----

- (iii) Why do we need a house?
