

Name:..... Class & Div Roll No.....

Marks Scored

Signature of the Invigilator

Max. Marks

Signature of the Parent

Question 1

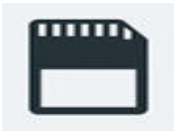
(i) Circle what a computer mouse lets us do: [2]

- (a) Draw pictures
- (b) Cook food
- (c) Take printout
- (d) Scroll up and down
- (e) Play games
- (f) Select an item

(ii) Identify the following figures and name them: [4]



(a)_____



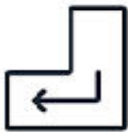
(b)_____



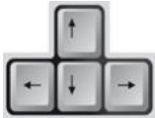
(c)_____



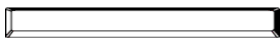
(d)_____



(e)_____



(f)_____



(g)_____



(h)_____

(iii) Choose the correct answer: [3]

- (a) What do you call the small arrow moving on the monitor?_____
- (1) Mouse Pointer (2) Tail (3) Stick (4) Wire
- (b) _____ opens an item.
- (1) Click (2) Double-click (3) Scroll (4) Right click
- (c) A keyboard has _____ enter keys.
- (1) one (2) two (3) four (4) three
- (d) The _____ key erases the text to the left of the cursor.
- (1) Enter (2) Spacebar (3) Backspace (4) Number

- (e) A hard disk is fixed inside the _____ cabinet.
 (1) CPU (2) CD (3) Mouse (4) Printer
- (f) Where do you store fruits, vegetables and cold drinks?

 (1) Pencil box (2) Lunch box (3) Almirah (4) Refrigerator

Question 2

[2]

Write True or False:

- (a) A mouse is kept on a mouse pad. _____
- (b) A mouse has four buttons. _____
- (c) Storage places are used to store things. _____
- (d) A memory card is very big in size. _____
- (e) You can type your age using spacebar key. _____
- (f) A mouse has a tail fixed to the CPU cabinet. _____
- (g) You should push the computer table. _____
- (h) Do not run in the computer lab. _____

Question 3

[2]

Identify the type of keys used in the sentences given below:

Do you like to have 5 ice-creams?

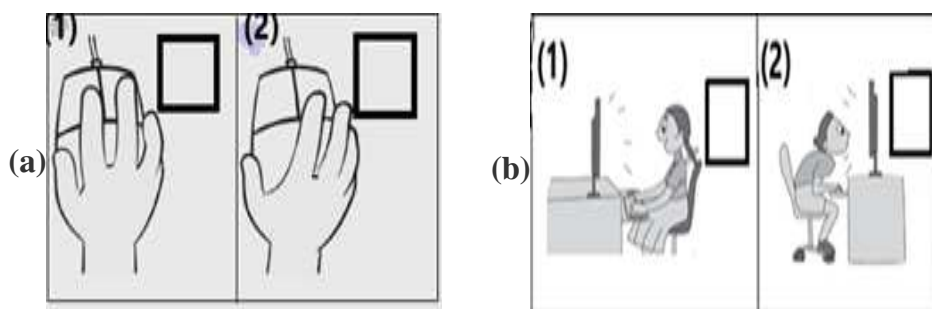
Yes, I do.

- (a) The _____ key helps to add space between words.
- (b) The _____ keys are used to type letters.
- (c) Which key helps you to move the cursor to the next line? _____
- (d) Which key helps you to type counting? _____

Question 4

[1]

Tick ✓ the correct way of using the computer and cross X the wrong one:



Question 5

Answer in one word:

[8]

- (a) How many times do you press the left mouse button clicking?

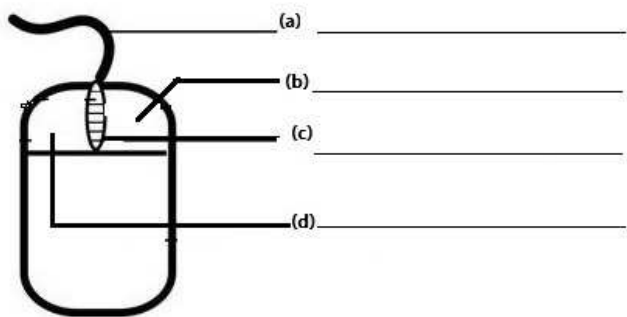
- (b) Which storage device does a computer must have? _____
- (c) Name the device which helps you to type a story? _____
- (d) Where do you store the data in mobile phones? _____
- (e) Name a storage device that can be carried anywhere. _____
- (f) _____ is a round shaped disc.
- (g) Which finger must be placed on the left mouse button?

- (h) Which key helps you to type your name? _____

Question 6

Label the parts of the mouse:

[4]



Question 7

Match the following:

[2]

- | | |
|-----------------|------------------|
| (a) Number Keys | 1. Storage Place |
| (b) Spacebar | 2. 0 to 9 |
| (c) Cupboard | 3. Buttons |
| (d) Mouse | 4. Keys |
| | 5. Longest Key |

Question 8

(i) Name the following:

[3]

- (a) The device that has two buttons. _____
- (b) The term used for pressing the left mouse button twice quickly.

- (c) The devices that are used to store your computer's data.

- (d) The key that erases the incorrect text. _____

(e) A smart machine that works on electricity. _____

(f) A part of the mouse that helps in moving the page up and down.

(ii) Complete the following paragraph with the words from box given below: [3]

AI, Robot, restaurants, Story, teach, clean.

_____ is an intelligent machine. It uses _____ technology. It can read out a _____. It can _____ the house before mom comes back from office. It works in _____ to serve food. It can _____ you to solve complex calculations.

(iii) Write the missing letters of various storage places used in our day today life: [2]

(a) T _____ P _____

(b) P _____ C I L B _____

(c) R E _____ R _____ E R _____ T O R

(d) W A _____ E R B _____ T _____ L E

(iv) Complete the instructions to be followed while using computers: [4]

You should move quietly in a _____ (circle/queue) while entering the computer room. You should not _____ (eat or drink/read) in the computer room. Do not touch the _____ (wires/mouse) when the computer is ON. Always sit _____ (straight/bend) while working on a computer. Press the keys of the keyboard _____ (gently/rudely). Keep the computer system _____ (opened/covered) when not in use.
